

ChromaSync™

Part of the Northstar™ Simulation Display Solution



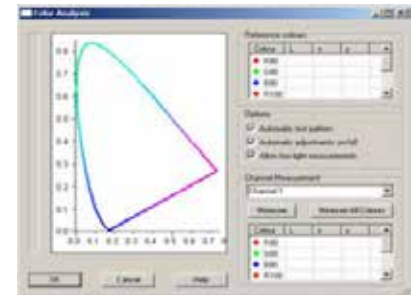
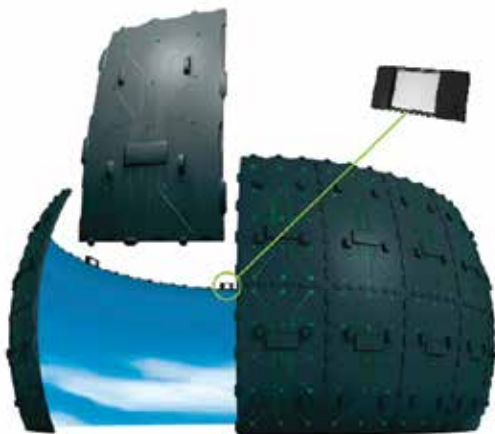
Automatic Color Calibration System

Over time multi-projector displays suffer from differences in uniformity across the image. Each projector's capability to maintain equality in colors and intensity may vary over time, and touch up adjustment is needed.

ChromaSync handles this challenge with an automated sensor system. One ChromaSync sensor per projection channel enables the system to measure and characterize each projector. Sensors are mounted on an outside edge of the projection screen, where projectors can slightly overshoot to hit the sensor.

By comparing data on each projection, correction is calculated. Through individual gamma mapping, intensity correction and color correction the image is touched up without the need of expert personnel or external equipment.

ChromaSync is included standard on all 3D perception Aurora smart-screens, but is also available in retrofit and upgrade scenarios.



Key Features

- One-click color calibration
- Integrated system
- Objective calibration
- Measure and characterize color capability of projectors
- Define and set reference colors
- Calibrate individual projectors to reference colors

About 3D perception

3D perception provides advanced display components and immersive simulation display systems.



Main Offices

Europe
Nye Våkås vei 12
1395 Hvalstad, Norway
+47 66 98 70 70

United States
12605 Challenger Parkway, Suite 170
Orlando, Florida 32826
+1 321-235-7999

info@3d-perception.com
www.3d-perception.com