



3D perception offers a range of turn-key, preconfigured Northstar™ simulation display systems optimized for specific domains. Each system supports multiple projector models and adapts to diverse program requirements, facility constraints, cabins, and other obstacles.

Gemini™ Joint Fires Support Systems are purpose-built to provide realistic joint fires training, offering a large operational area for up to six trainees. These systems deliver an immersive training environment with a high-resolution, extensive field of view, making them ideal for forward observer, call-for-fire, and close air support applications. Flexible screen sizes allow customization to program needs without compromising image quality or operational scope.

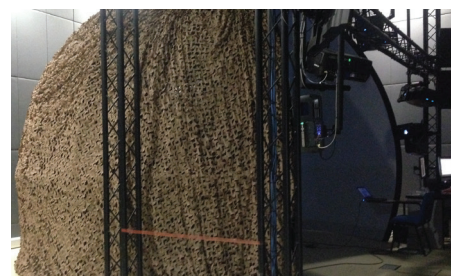
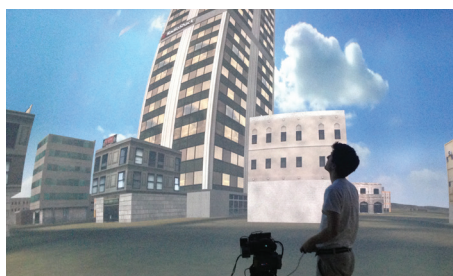
## Gemini Features

- Large, high-resolution field of view for immersive training
- Range of radial screen sizes from 1.05 m / 3.4 ft to 13 m / 42.7 ft
- Large operational area accommodating up to six trainees
- Designed for JTACs, FACs, CAS, and forward observer applications



## Past Performance

Delivered to several major land training programs including US Army and Foreign Military Sales.



## Seamless. Focused. Performance.

- Industry-leading camera-free automatic image alignment and calibration for increased cyber security and simulator uptime
- Seamless image through all times of day with full image contrast and dynamic range via automated dynamic electronic-optical hybrid blending
- Image Generator and projector independence makes integration easy and future-proof
- Light closeout options and support for Night Vision Goggles
- Centralized system control via unified interface
- Proven expertise with hundreds of global deliveries since 1997